

SMTCP

Control Video Matrixes over the Internet



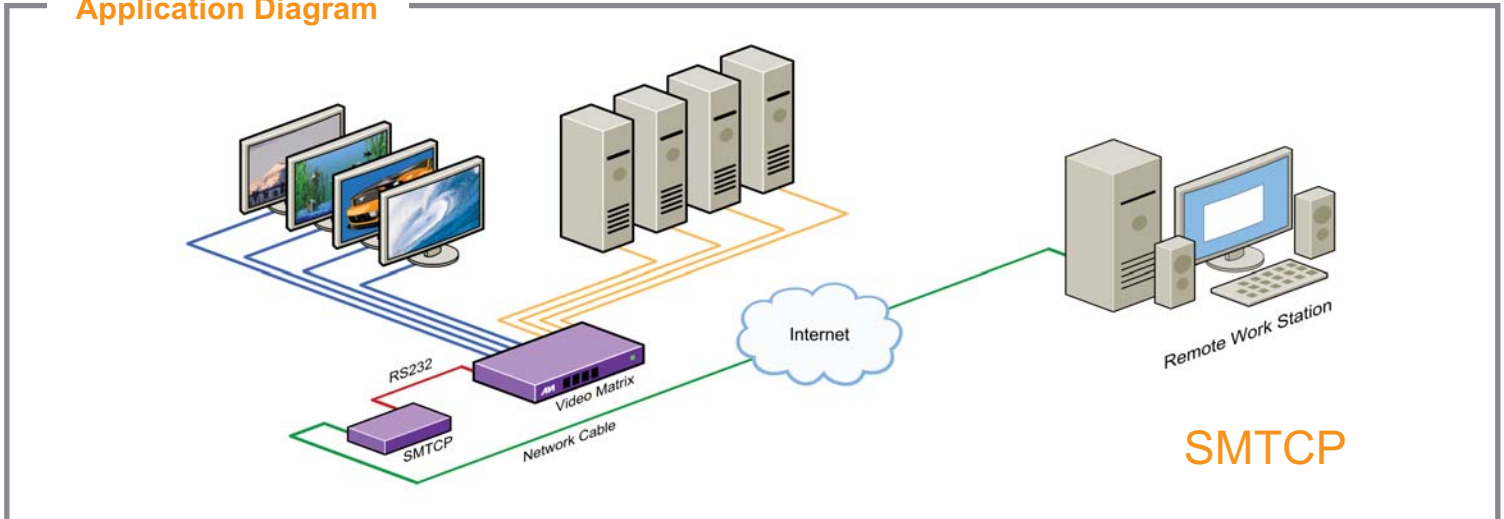
Our SMTCP Device allows you to control our entire line of video matrix products over the Internet from anywhere in the world

Features

- Supports HTTP and Telnet protocol
- 10/100 Ethernet interface.
- Password Protected
- Up to 5 users can control the matrixes
- Ip configuration via tcp/ip and RS232

Control Video Matrixes over the Internet

Application Diagram



Specifications

	60Mhz internal Bus
	256-Kbyte Flash
	32-Kbyte RAM
Serial	(3) UART Serial Ports with DMA Capability
Power	5V Operation

Order Info

Qty	Description
1	SMTCP device
1	AC Power Adapter (varies by region)
1	RS232 to RS422 converter
1	Serial male to male crossed cable

Applications for SMTCP

Learning and Training

SMTCP can be used in educational presentations to multiple locations, in schools and in other training facilities.

Many leading businesses have already recognized the innovation of SmartAVI's technologies and have eagerly implemented them. Users of SmartAVI technology include among others;

